

## EX-RENTAL 6M X 3M PORTABLE BUILDING

BLACK FRAME - SPTU220073 | NEAR NEW CONDITION (ONE USE ONLY)

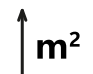





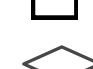



Purchase Price - \$24,500 + GST (Save \$2770 on new)

Lease (minimum 6 months) - \$750 per month + GST - please enquire for shorter lease terms

Pricing excludes delivery - quoted on request



### Building Inclusions:

-  18 sqm (6m x 3m unit)
-  Left hand swing door
-  2x Double-glazed sliding windows
-  Corten steel, zinc galvanised, two pac paint finished
-  Internal walls are powder-coated (off-white gloss), galvanised sheet metal
-  Commercial grade vinyl flooring
-  Insulated with fire retardant rock wall (72 mm walls, 100mm floor and ceiling)
-  5x 10-amp standard twin power outlets, external C-Form 32amp connection, switchboard
-  2x LED baton lights
-  1x HVAC unit

A highly engineered building system suitable for a variety of spaces, including site and commercial offices, classrooms, clinics, storage, administration spaces, locker rooms, lunch rooms, and more.

### Additional inclusions:

- Electrical WOF - valid 13/07/23 to 13/07/27
- Ex-rental building warranty up to 12 months

### Exclusions:

Delivery and installation, adaptations, site or groundworks, and joining kit if connecting buildings. Please enquire for a quote.

### Optional adaptations:

Not available for rental units; please enquire about sales unit adaptations to find out availability.

### Condition:

This nearly new building has only one previous use ( a short-term rental) and minor imperfections (scratches on the vinyl internal floor). Any defects or damages will be noted on inspection.

### Pre-purchase inspection:

We encourage inspections of all our buildings before lease or purchase, please call us to make an appointment.

WALL PANELS:  
 EXTERIOR CLADDING:  
 PROFILED GALVANISED SHEET METAL - 0.5mm

INTERIOR CLADDING:  
 PROFILED GALVANISED SHEET METAL - 0.5mm

INSULATION:  
 69mm ROCK-WOOL (DENSITY 110 - 120KG/M)

FRAME:

ROOF: 1.6MM CORRUGATED STEEL PANELS  
 HEADER: 3MM WELDED STEEL PROFILE  
 COLUMN: COLD ROLLED 3.0MM STEEL PROFILE  
 BASE: COLD ROLLED , WELDED 4MM STEEL PROFILE

PAINT SPECIFICATION:

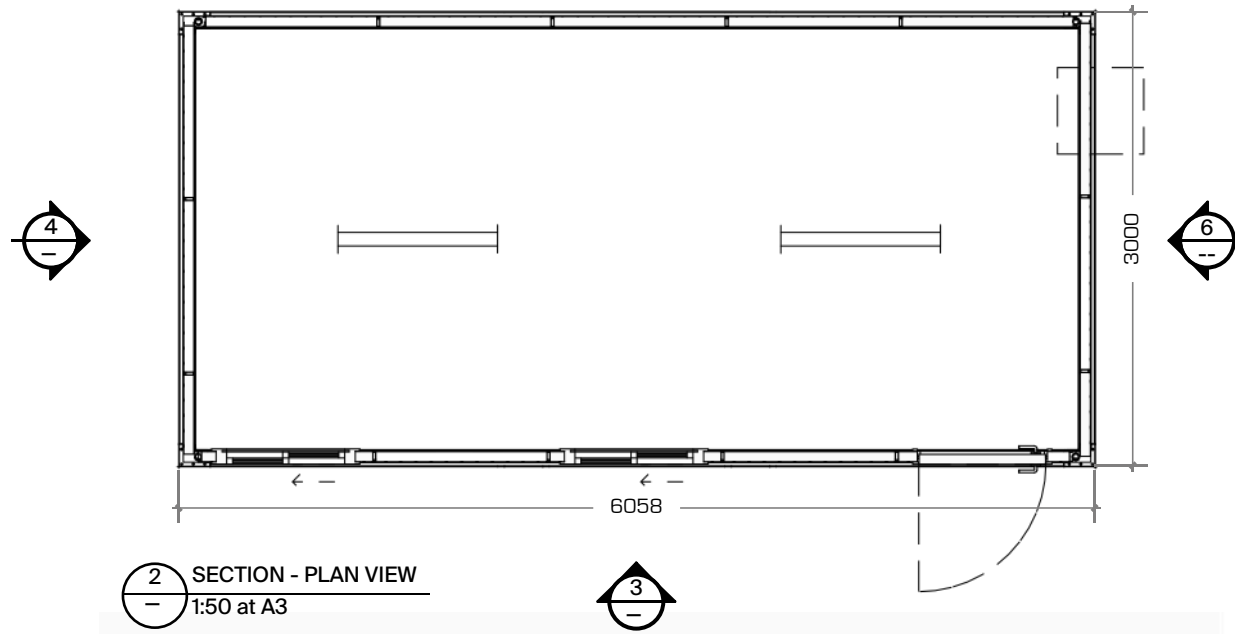
TOP AND BOTTOM FRAME:  
 ELECTROGALVANISING: ZINC 10 MICRONS  
 PRIMER COATING: ZINC RICH 20 MICRONS  
 TOP COATING: POLYURETHANE TOP COAT 50 MICRONS  
 TOTAL DRY FILM THICKNESS - 80 MICRONS

CORNER CASTING AND CORNER POST:  
 SHOP PRIMER: ZINC RICH 10 MICRONS  
 PRIMER COATING: ZINC RICH 20 MICRONS  
 TOP COATING: POLYURETHANE TOP COAT 50 MICRONS  
 TOTAL DRY FILM THICKNESS - 80 MICRONS

FRAME PAINT: BLACK OR WHITE OPTIONS @ BRIGHTNESS 70-80



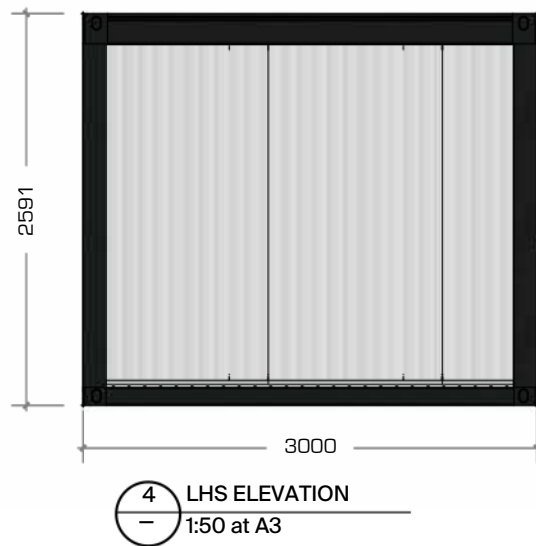
5 REAR ELEVATION  
 1:50 at A3



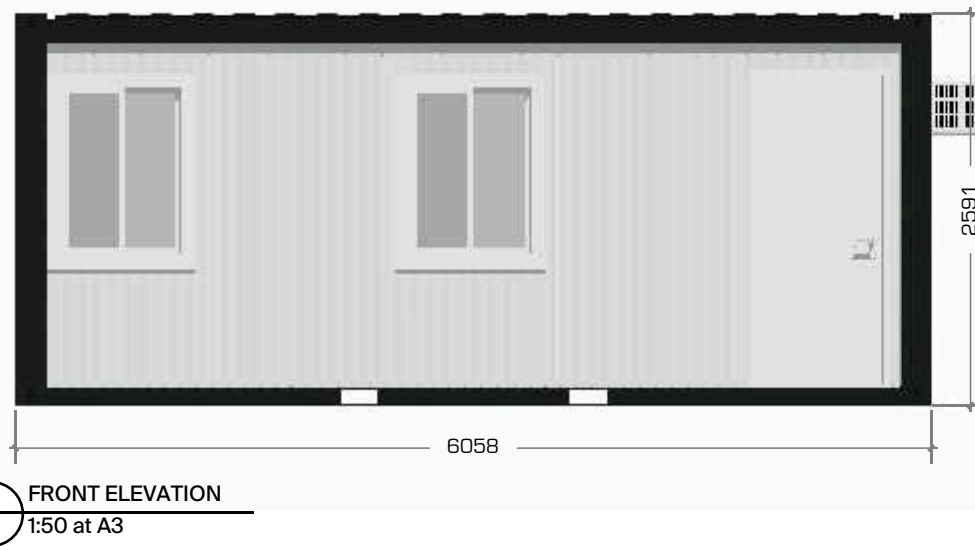
2 SECTION - PLAN VIEW  
 1:50 at A3



1 PERSPECTIVE VIEW  
 Not to Scale



4 LHS ELEVATION  
 1:50 at A3



3 FRONT ELEVATION  
 1:50 at A3



6 RHS ELEVATION  
 1:50 at A3



Project: 6X3 RENTAL UNIT  
 SPTU 220073-5

Dwg Title: GENERAL ARRANGEMENT

Dwg No.: 220073-5\_01  
 Job No.: ---  
 Drawn: DS

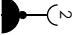




Revision: A For Information

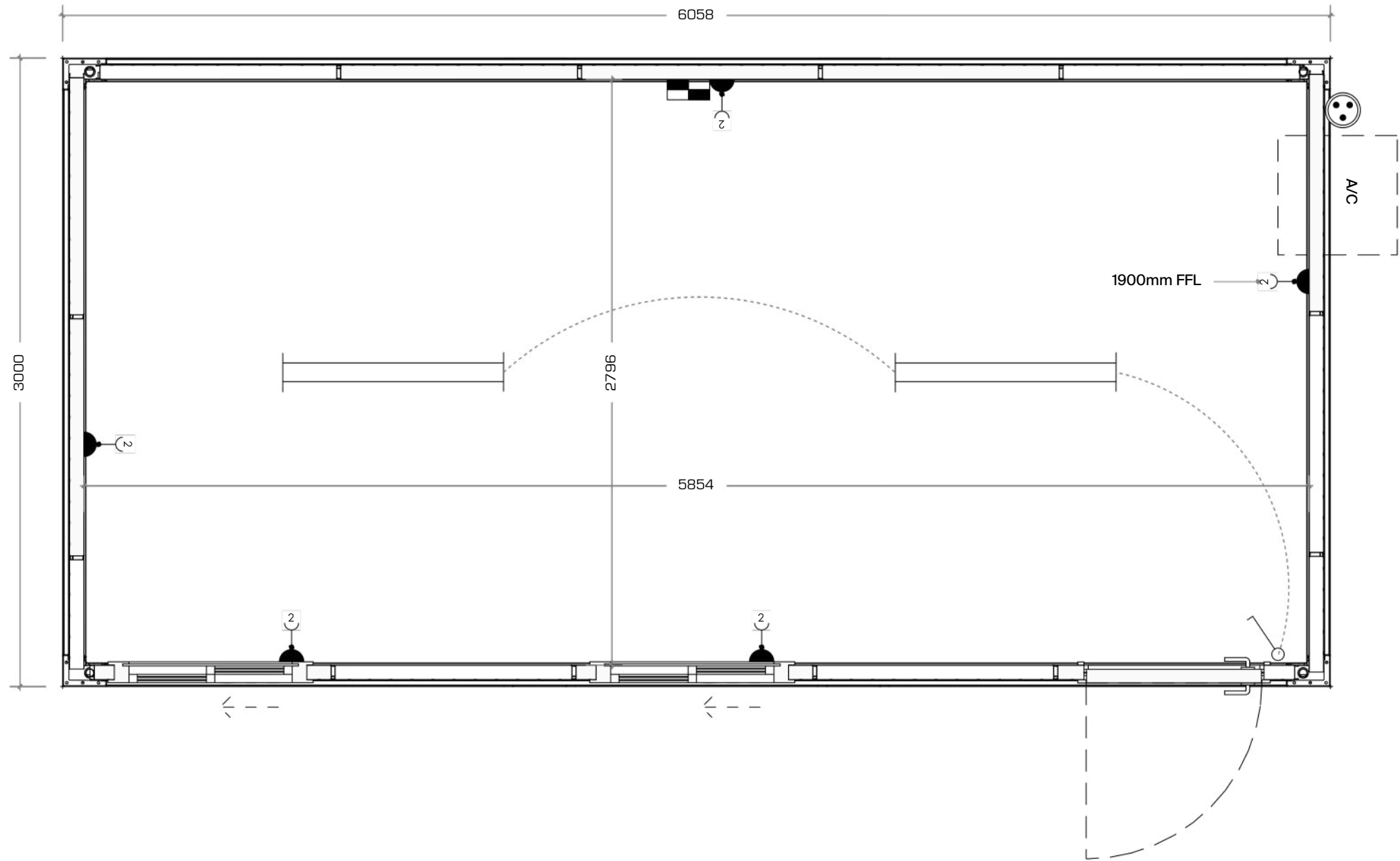
Date: 06/06/23

File Name:  
 This drawing and the information it contains is the property of PACIFIC PORTABLE BUILDINGS and shall not be reproduced or transmitted without their express permission.

Scale: 1:50 at A3

PACIFIC PORTABLE BUILDINGS  
 40-42 Wilkinson Road, Ellerslie, Auckland  
 New Zealand  
 Ph: +64 (09) 846 8650  
 www.pacificportables.co.nz

-  DOUBLE POWER POINT  
(300MM ABOVE FLOOR LEVEL  
UNLESS OTHERWISE STATED)
-  LIGHT SWITCH
-  LED STRIP LIGHT
-  MAIN SWITCHBOARD
-  32A CEE 3P CONNECTION



1 FLOOR PLAN  
1:25 at A3